

Lights, Camera, Action!



Advanced Hands Free Platform

The Smartest and Smallest Light

Black Fluorescence Imaging

SafeLoupe Laser Filter

HD Loupe Camera

Ergo HD Loupes



Nano Freedom is crammed with innovative technologies. It is bright, light, and feels just right. Best of all no stray wires, no inconvenience, no hassle. iOCam provides super sharp magnified live video for enhanced patient communication/referrals, insurance documentation as well as staff and student training/education.

Dr. George Freedman, Richmond Hill, ON, Canada



iZoom Loupes - Very comfortable, lightweight, and cool-looking. Excellent optics, wide field and very good resolution.

Dr. Michael Miller, Houston, TX



The SafeLoupe system is a "must have" product when doing laser procedures.

Dr. Howard Glazer, Fort Lee, NJ

DentLight

Nano Freedom²

Wireless = Effortless



Mounting Adapter
Easy Dovetail Attachment

Lightweight battery
Proximity sensor On/Off
Slide to existing frame temple
Little extra weight on nose or ear

Freedom Lamp
Penny size 5 grams
Focused beam (~3" field)
Easy clip-on filter

Reconfigurable

Nano Technology Teflon Connection
Field Reconfigurable for Function, Fit, and Service

Superior Performance

20000 (one battery) or 40000 lux (two batteries)
3 (one battery) or 6 hours (two batteries)
Color temperature (5500-6500K)

Safeloupe Insert
Fluorescent Filter



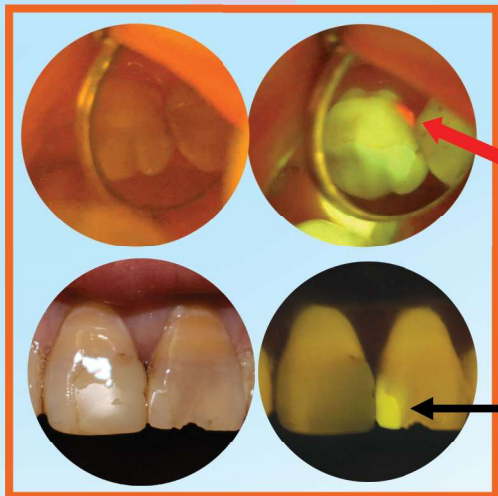
Black Lamp
Dual wavelengths

Seeing is Believing!

Nano Black

**Dual Color: White and Violet for
Illumination and Fluorescence**

Composites
Caries
Plaque
Cancer



Visualization of dental caries and decays

Detecting composites and excess adhesives

Amazing Wireless Light !

NO MORE TANGLED CORDS!

Nano 2S Plus



Freedom Lamp
Super Lightweight

Reconfigurable
Nano Technology Teflon Wire
Field Reconfigurable
Easy Upgrade to Wireless
Memory wire conforming to frame contour

Incredible Engineering Design

- Three Power Levels (40, 20, 16k lux)
- Light Weight (lamp 5g, battery 118g)
- Super Small (lamp 16mm)
- Flexible Thin wire
- 10-24 hours Non-stop run
- Recharging time: 90% in 2 hours

Xtreme²



Surgical precision

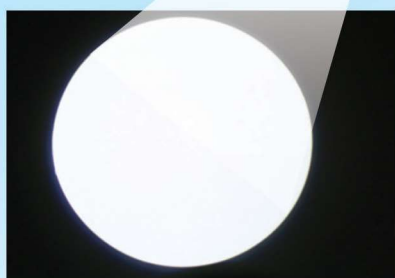
Super high contrast
60000 lux

Seeing beyond the surface



Long Lasting Smart Battery

10 to 24 hours running time (3 power settings)
Super reliable MicroUSB connection
Hands free raised elbow activation button
Constant output power throughout run time
Pass drop proof test



DentLight

Fit on Any Loupes or Eyewears

Add-on Options and Accessories

8600120 Nano Freedom lamp



8600220 Nano Black lamp



8600022 Nano composite filter



8610110 Nano Freedom battery pod



8600530 Nanio Freedom battery (2/pk)

8600130-2 Nano 2S Plus Battery Pack

8601140 Nano Freedom Dual Battery Charger

8500224 Female Dovetail adapter



8500124 H-adapter



8500127 Slide-in-adapter



8501124 T-adapter



8701100 Universal-H combo adapter



8500121 Uc-adapter



8500128 Q-optics adapter



8510120 Articulating arm



8510121 Single side arm



8510122 Branch arm



8511123 Camera branch arm



8501032 2S+ MicroUSB cord



8610130 2S Battery Clip



8501022 Freedom cord



Dual Battery Charger always keeps a fresh backup battery

Fully charged in < 1 hour

iSquare Light

Easy Interchange with Existing Light

- Slide in direct fit to existing arm fixture
 - easy wire twist connection to existing 2 wires
 - match fixture diameter for easy fit
- Reflective focused square illumination beam
 - Uniform color temperature throughout FOV
 - Self dimmable and easy on/off
- Composite filter attachment with easy flip-up for preventing curing
- Large depth of field
- LED can save up to 90% on energy bill



Power Supply: AC or DC 7 - 24V

Power: 6W

Intensity: 0 - 45000 lux

Light Pattern: 180 x 90 mm (at 27")

Color Temperature: 5000 K

Standard Adapter Size: 22mm

Weight: 2.2 lbs

Optional: Integrated Camera or Composite Filter

Order Information

8600140 **iSquare Operating Light**

DentLight

iZoom HD Loupes

High definition and quality loupes with high resolution and high contrast images. Lightweight frames and optics deliver the most comfort and better working posture.



Ergo



TTL



Flip-up



Variable

2.5 - 6.0 X



Part Number

850005 0 - 250

| Loupe | Type | Magnification | Working Distance | Reading IP Distance | Case Type | Frame |
|-------------|------|---------------|------------------|---------------------|--------------|------------------------|
| 0=Flipup* | | 250=2.5X | S=10-14" | 50=Flipup | S=Soft Case | A=Adilite |
| 2=Variable* | | 300=3.0X | R=14-18" | 54=54mm | M=Metal Case | D=D2 |
| 3=Mini* | | 350=3.5X | E=18-22" | 56=56mm | | M=Metal |
| 4=TTL | | 2530=2.5-3.0X | | 58=58mm | | R=Rudilite (Ti-temple) |
| 5= Ergo | | 3035=3.0-3.5X | | 60=60mm | | Y=Rudy Project Rydon |
| | | 400=4X | | 62=62mm | | |
| | | 600=6X | | | | |



Including Loupes, Case, Soft Cleaning Cloth, Headstrap, and Screw driver*.

SafeLoupe

Adaptive Loupe Filter for Laser, Curing and Fluorescence

Tired and annoyed with clip-in filters?

- Fighting to fit onto your loupes
- Discomfort on your face from
 - Weight
 - Fogging
 - Hurting your eye/face
- Low light and color distortion
- Procedure interruption
- Cross contamination

Quick and easy SafeLoupe Clip-on

Preconfigured to your loupes in adapter size and the number of articulating arms
Facial viewing field laser protection from diode lasers direct and reflected beams.

Why buy laser loupes if you can convert your own?

Try patent-pending SafeLoupe Laser Filter:

Adaptive filter to your loupes

- Clip-on to loupes ocular rim
- Super lightweight and comfortable
- Minimum light loss
- No color distortion
- Hassle free laser procedures
- Custom preconfiguration to your loupes
- Extraocular shield for full protection



Specifications

810nm OD5+
940nm OD5+
980nm OD5 +
1064nm OD7+
2780nm OD7+
2940nm OD7+

Curing
380-500nm OD2+



Safeloupe Insert



Integrate your Loupes with Adaptive Filters

- Easy slide fit in
- Lightweight and comfortable
- Hassle free laser and restoration procedures

DentLight

iOCam HD Video Camera



**HD 1280x720
Magnified Images**

Empower you with iOCam
Magnified Imaging and Communication System
Your handsfree assistant
Capture what you see
Share your findings with patients etc.

**Video or
Picture**

**Custom Surgical Kit
Wireless iOCam
Wireless Xtreme² light**

Ease of Use and Adaptation

- Fits to loupes (Orascope, DFV, Zeiss etc)
- Compatible with most headlights
- Easy slide in and out of the eyewear
- Built-in microphone

Incredible Engineering Design

- **Magnifications at 16-inch distance**
2.0X, 3.0X, or 5.0X
- **Resolution** 1280x720 @ 30 fps
- **Lightweight and small size**

| | Weight (grams) | Size (mm) |
|--------|-------------------|---------------|
| Imager | 4 | 23 (D)x13 (L) |
| Lens | 8 | 15 (D)x13 (L) |

• Run time:

USB Limited by hard drive
Wifi Battery 4.5 hours (Optional)

- **Live recording or still image snapshot**
- **Compatible with existing patient software including**
Dexis Imaging and Vixwin



**Communicate better
Raise your acceptance rates
Market your practice with an edge**

DentLight